



jordan fishwick

4 Denewood Court, Queens Road, SK9
Offers In Excess Of £270,000



Denewood Court Wilmslow SK9 5HP

Offers In Excess Of £270,000




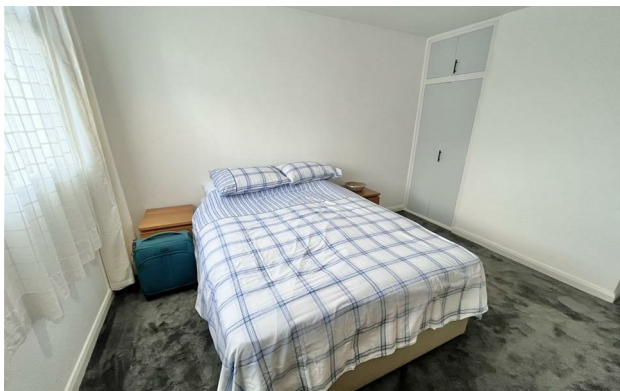
A well proportioned first floor two double bedroom purpose built apartment with balcony and garage. Offering spacious accommodation throughout and being located within the heart of Wilmslow town centre, which offers a wide range of amenities including a number of local shopping facilities, bars, restaurants, local leisure centre and with Wilmslow train station offering a direct service to London Euston and Manchester City centre the location caters for many different needs. Within a 10 minute drive away there are many additional amenities such as fitness centres, golf courses, Marks and Spencer and John Lewis. The property is well placed for easy access to the M56 for commuters to Manchester and the North West commercial centres and Manchester Airport is less than 20 minutes away. There are several good local state schools and a wide choice of private schools within the area with parks and beautiful countryside surrounding the whole area. Internally, the apartment is accessed via a communal entrance and lobby area which leads to the private entrance hallway. The internal apartment accommodation comprises in brief: a well proportioned living room with internal glazed double doors leading to the separate dining room. This dining room also has access to the BALCONY. There is a fitted kitchen with space for appliances. The master bedroom is fitted with wardrobes and the second bedroom is also a spacious double with a fitted cupboard. To the exterior of the development there are attractive communal gardens which are mainly laid to lawn with mature trees. The property also has a single garage offering ideal off road parking or further storage. No Onward Chain.

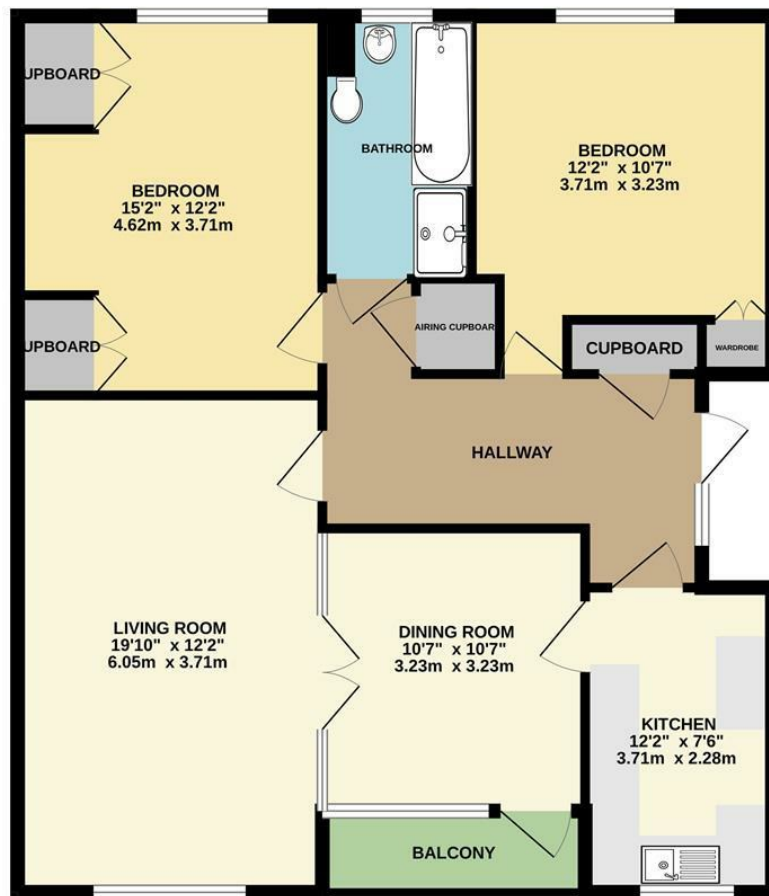


- First Floor Apartment
- Situated in the heart of Wilmslow
- Good size accommodation
- Two Double bedrooms
- Lounge and Dining room
- Balcony
- Garage
- Residents Parking
- No Chain
- Share of Freehold



Energy Efficiency Rating		
	Current	Potential
Very energy efficient - lower running costs		
(92 plus) A		
(81-91) B		
(69-80) C		78
(55-68) D	63	
(39-54) E		
(21-38) F		
(1-20) G		
Not energy efficient - higher running costs		
England & Wales	EU Directive 2002/91/EC 	





Measurements are approximate. Not to scale. Illustrative purposes only.
 Made with Metropix ©2024



These particulars are believed to be accurate but they are not guaranteed and do not form a contract. Neither Jordan Fishwick nor the vendor or lessor accept any responsibility in respect of these particulars, which are not intended to be statements or representations of fact and any intending purchaser or lessee must satisfy himself by inspection or otherwise as to the correctness of each of the statements contained in these particulars. Any floorplans on this brochure are for illustrative purposes only and are not necessarily to scale.

Offices at: Chorlton, Didsbury, Disley, Hale, Glossop, Macclesfield, Manchester Deansgate, Manchester Whitworth Street, New Mills, Sale, Wilmslow and Withington

36-38 Alderley Road, Wilmslow SK91JX
01625 532000

wilmslow@jordanfishwick.co.uk
 www.jordanfishwick.co.uk